

## INSTALLING ZAPEX ENCODER ON WINDOWS 2000 Professional/SERVER

Zapex Encoder model ZP230/ZP330 series does not yet support Windows 2000 Plug & Play installation. If it is not installed according to the instructions below, then every time the OS is restarted, it may ask for an "INF" file. Please follow the instructions below to overcome the Wizard Dialog box not coming on every time the OS is restarted.

Turn off the computer and install the encoder on the Windows 2000 platform. Apply power to the encoder board and turn on the computer.



After Windows 2000 is loaded, a "Found New Hardware Wizard" will come on the screen. Click Next.

**Found New Hardware Wizard**

---

**Install Hardware Device Drivers**

A device driver is a software program that enables a hardware device to work with an operating system.



This wizard will complete the installation for this device:

 Multimedia Controller

A device driver is a software program that makes a hardware device work. Windows needs driver files for your new device. To locate driver files and complete the installation click Next.

What do you want the wizard to do?

☒ Search for a suitable driver for my device (recommended)

☐ Display a list of the known drivers for this device so that I can choose a specific driver

< Back   Next >   Cancel


Use the default settings in this window and click **Next**

**Found New Hardware Wizard**


---

**Locate Driver Files**

Where do you want Windows to search for driver files?



Search for driver files for the following hardware device:

 Multimedia Controller

The wizard searches for suitable drivers in its driver database on your computer and in any of the following optional search locations that you specify.

To start the search, click Next. If you are searching on a floppy disk or CD-ROM drive, insert the floppy disk or CD before clicking Next.

Optional search locations:

☐ Floppy disk drives

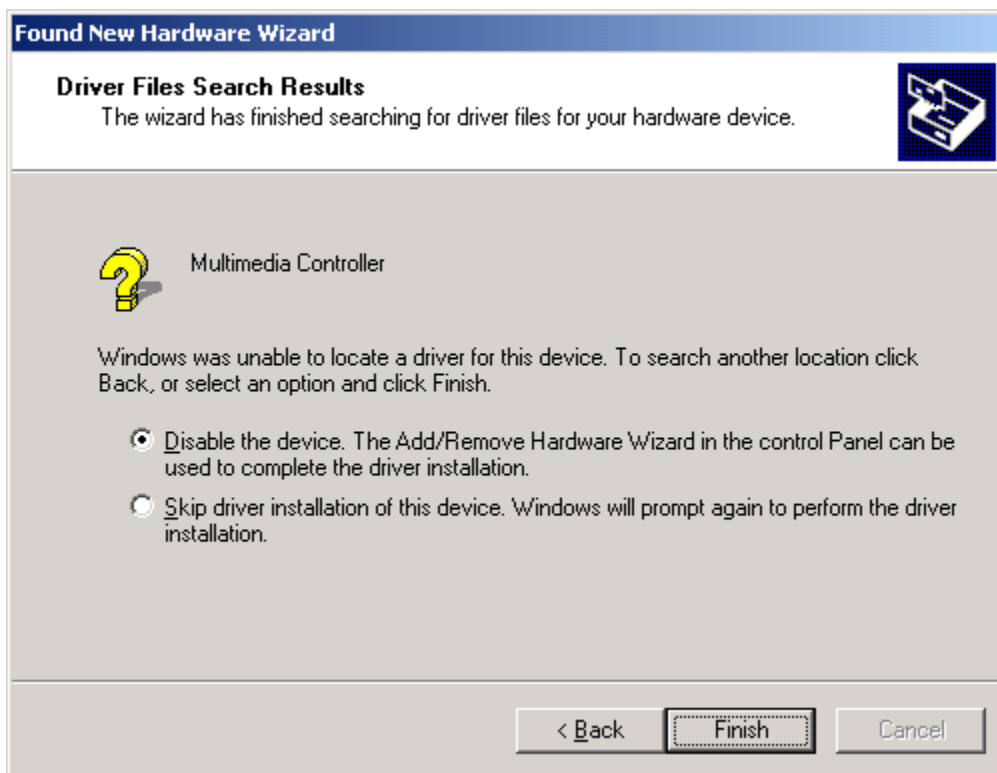
☒ CD-ROM drives

☐ Specify a location

☐ Microsoft Windows Update

< Back   Next >   Cancel

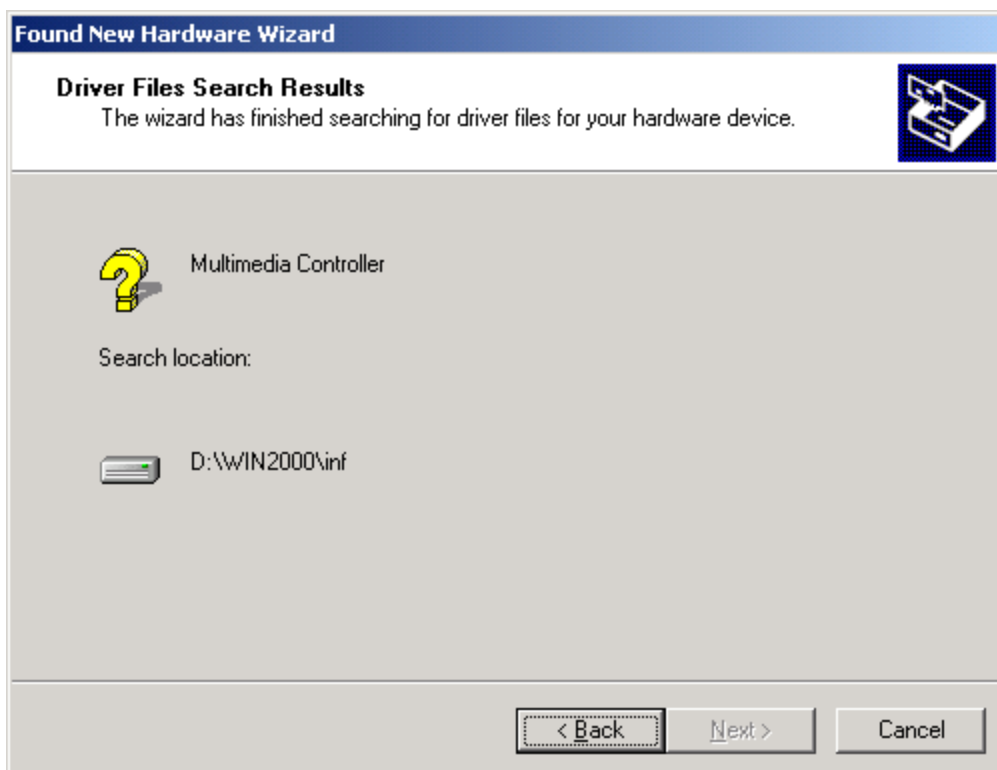
Keep the default settings in this window as well and click **Next**



**Important:**

Select ***"Disable the device."*** in this window and then click Finish

Now you can Install Zapex Controller software.



**Note:** If *"Skip driver installation of this device"* is selected, every time you restart the system, the *"Found New Hardware Wizard"* window will come on and ask you to insert a disk to find the INF file similar to the graphics below.